

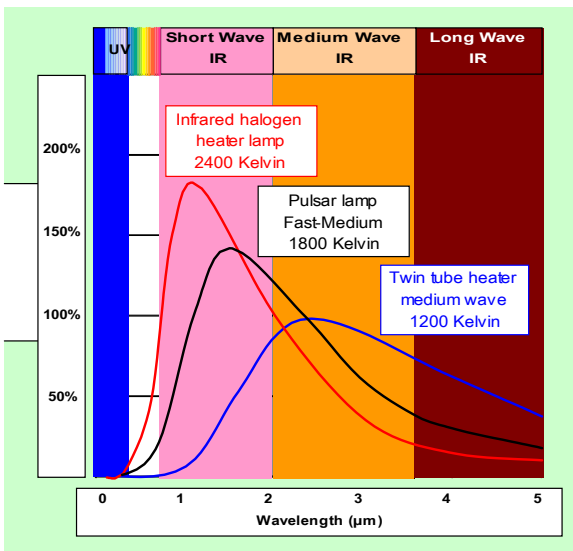
### Jacketed Infrared Lamp



PUSH-IN connector type available

**TOSHIBA** Jacketed infrared lamps are housed by clear quartz sleeve to;

- Prevent contamination (over food, for example) by accidental heater break.
- Avoid chemical attacks over heater tubes to maintain good performance.
- Protect the infrared lamps from unexpected thermal shock such as splashed water or foods



The protection by clear quartz sleeve more securely ensures long

life as well because of no direct contamination on infrared lamp inside from splashed sodium contained in foods. When such splashed sodium goes directly onto infrared lamp without protection

being operated at high temperature, devitrification phenomenon is caused on quartz tube glass. Devitrification deteriorates not only quality of quartz over time, but also lifetime of infrared lamp itself.

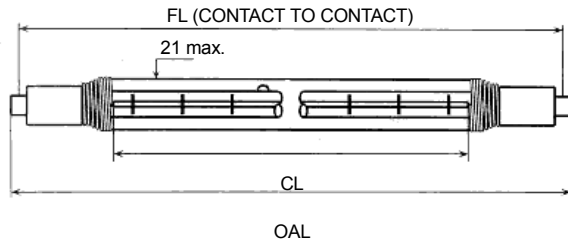
TOSHIBA Jacketed infrared lamps protected by clear quartz sleeve therefore bring benefits of;

- Stronger and more reliable
- Long life 5000h
- Economy (Instant heat, switched on-off within a second)
- Easy to replace (PUSH-IN socket base R7s connector available)

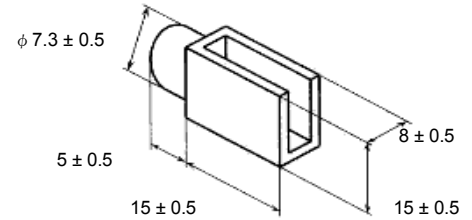


TOSHIBA jacketed infrared lamps are therefore the best suited for both warming and displaying in catering service operation.

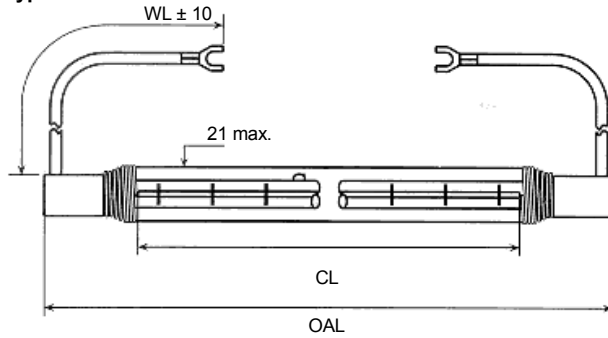
**Type 1 (PUSH-IN)**



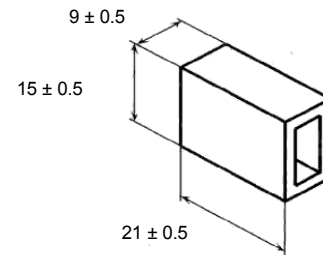
**Base dimensions for Type 1 (PUSH-IN)**



**Type 2**



**Base dimensions for Type 2**



Part code	Volts (V)	Watts (W)	Drawing	Wire length WL(mm)	Overall length OAL (mm)	Fixation length FL (mm)	Heating length CL (mm)	Burning position	Ave. Life	Ordering code
JHDS 230V 300W 60 VH	230 - 240	300	TYPE 1	-	117.6 max	$114.2 \pm 1.6$	$60 \pm 5$	Horizontal	1000	JHDS001
JHDS 240V 300W 160 VH	230 - 240	300	TYPE 1	=	221 max	$216 \pm 1$	$160 \pm 5$	Horizontal	5000	JHDS002
JHDS 240V 300W 160 BH	230 - 240	300	TYPE 2	$200 \pm 10$	$217 \pm 2$	-	$160 \pm 5$	Horizontal	5000	JHDS003
JHDS 240V 500W 160 BH	230 - 240	500	TYPE 2	$200 \pm 10$	$352 \pm 2$	-	$160 \pm 5$	Horizontal	5000	JHDS004
JHDS 240V 500W 160 VH	230 - 240	500	TYPE 1	-	-	$370 \pm 10$	$160 \pm 5$	Horizontal	5000	JHDS005
JHDS 235V 1000W 272 BH	230 - 240	1000	TYPE 2	$200 \pm 10$	$353 \pm 2$	-	$272 \pm 5$	Horizontal	5000	JHDS006
JHDS 235V 1000W 272 VH	230 - 240	1000	TYPE 1	-	350 max	$346 \pm 1.5$	$272 \pm 5$	Horizontal	5000	JHDS007